

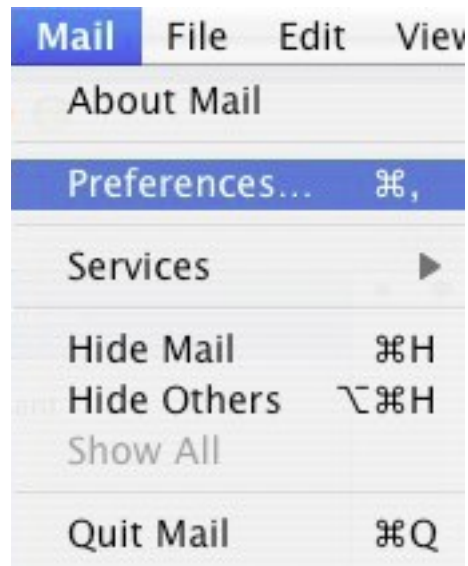


How to Check the Setup Apple OS X eMail program

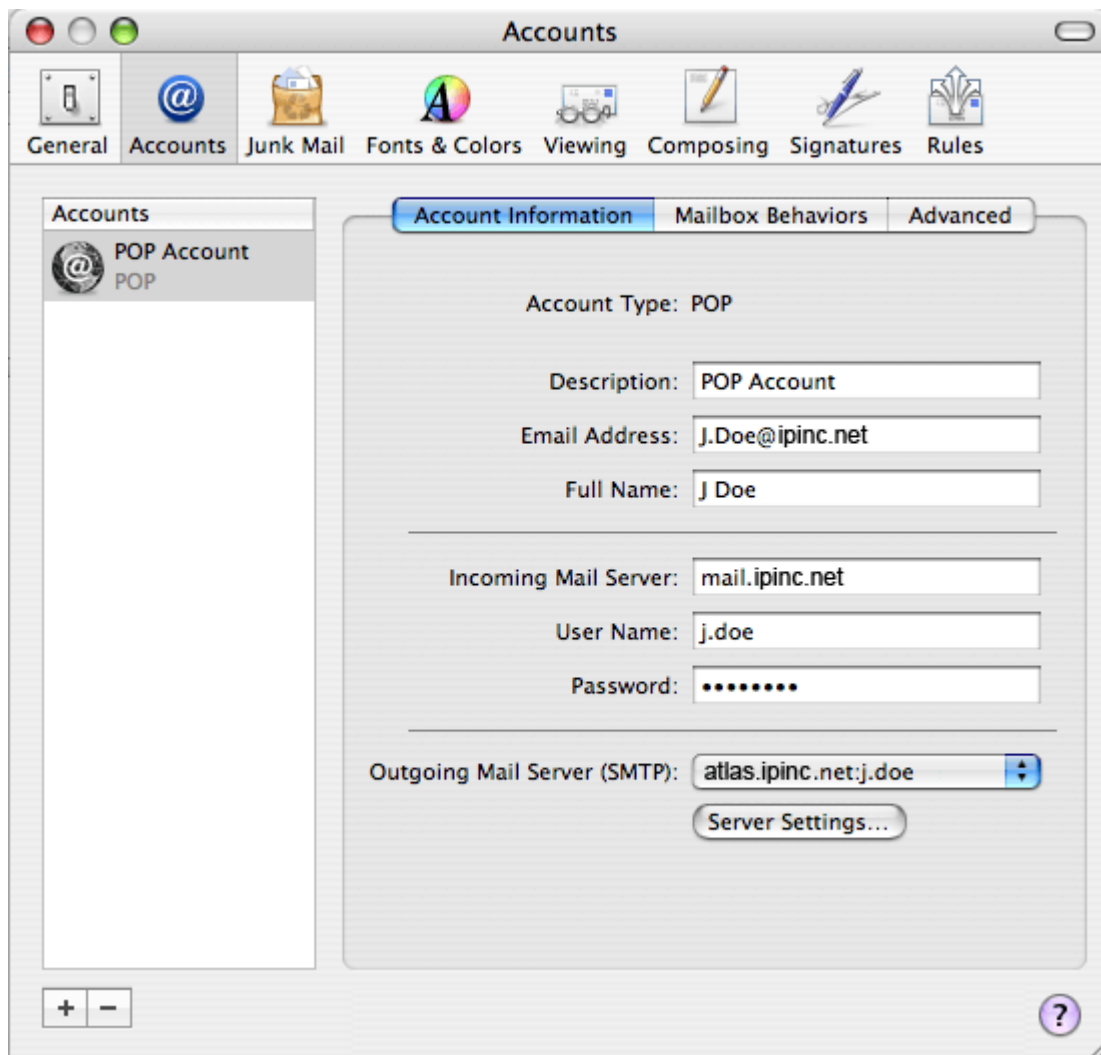


Start the eMail program from the “Dock” at the bottom of the screen

Now with the eMail program open click “Mail”, “Preferences”.



On the “Accounts” page check the entries, and click the “Server Settings...” button.



Now change "Server port" to 587, and enter the "Password" again.



©2000-2007 Seasurf Internet a division of Internet Partners, Inc.
1800 NW 167th Place Suite 160
Beaverton, Oregon 97006-8132
Phone Seaside +1 503 738 3844
Phone Beaverton +1 503 690 2700 FAX +1 503 690 9700